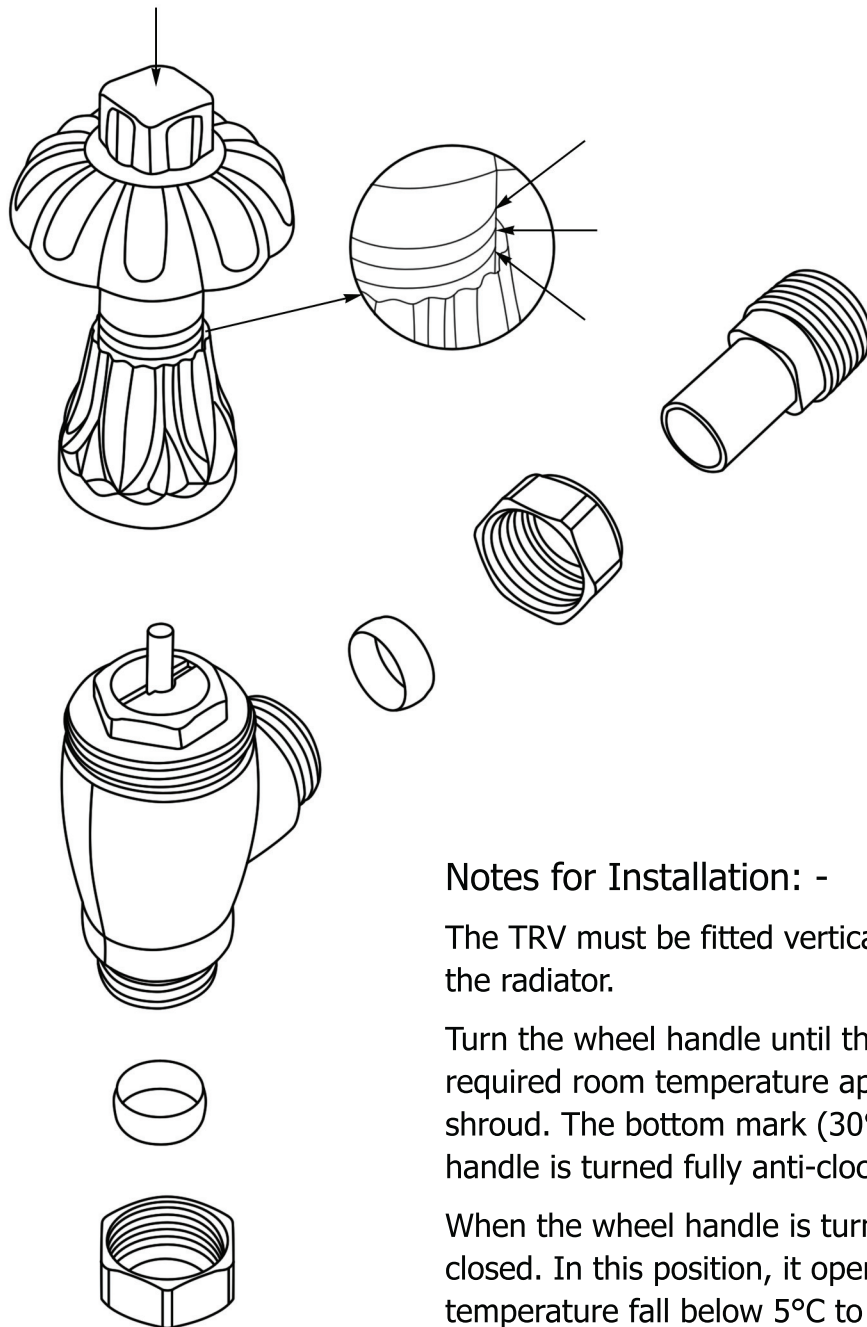


Crocus Thermostatic Radiator Valve (TRV) Operating Instructions

Temperature Sensing Head
(Do not cover and keep clean from dust)



Notes for Installation: -

The TRV must be fitted vertically and on the flow side of the radiator.

Turn the wheel handle until the mark corresponding to the required room temperature appears above the top of the shroud. The bottom mark (30°C) will appear when the wheel handle is turned fully anti-clockwise (valve is fully open).

When the wheel handle is turned fully clockwise, it will feel closed. In this position, it operates when the room temperature fall below 5°C to provide frost protection.

We do not recommend the use of abrasive or solvent based cleaning products, as these may damage the finish of the valve. Clean with a soft, dry cloth as necessary.



trads

www.tradscastironradiators.co.uk

T: 01400 263 320 | Email: sales@tradscastironradiators.co.uk

The Traditional Radiator Company